



**Kensington**  
SECONDARY SCHOOL

# Kensington Secondary School

*An Independent Public Education Support School*

Term 1, Issue 4  
29 March 2019

## From the Principal's Desk

### School Times

8.30am—2.40pm

### Recess

10.20am-10.40am

### Lunch

12.35pm-1.05pm

### Dates to Remember

**Mon 1<sup>st</sup> Apr**  
**West Coast Eagles**  
**Incursion**

**Fri 12<sup>th</sup> Apr**  
**Last Day of Term**

***Students commence***  
**Tues 30<sup>th</sup> April**

Well, we are hurtling towards the completion of Term 1 and much has happened in the few short weeks since we commenced the school year. Following some hiccups with our systems, we are finally in a position to release the IEPs. This follows on from the planning and preparation phase which hopefully all families were able to be a part of and were able to contribute to in a meaningful way. It has been mentioned previously that the school will be altering the timelines for this process, commencing this year, to bring the planning phases forward so that IEPs will be in place for the commencement of the term. This is just one of a number of changes that have already been implemented or are planned for that stem from the school improvement process commenced 2 years ago.

The School Board has been an important force in driving the changes that have been happening within our school over the past 2 years. They have become an important instrument of change and influential to the decisions that govern the direction the school is heading. Whilst there have been many people who have made valuable contributions during this time, I wish to single out Louise Goodman for her considerable influence as a parent member and Chair of the Board. I have worked very closely with Louise in her capacity as Chair, and value highly the wonderful contribution she has made to the school and to the growth and improvements we are experiencing. Louise is bringing her time with the Board to an end and I for one will miss her presence. On behalf of the school I extend to her our sincerest gratitude and admiration for all she has done to place our school in a much improved position.

There are a number of signs that a school is generally getting “things” right, with one of those being enrolments. In the Education Support context, the enrolment process is influenced by a range of factors including diagnosis, level of need, location, transportation, programs etc. Our school is currently experiencing an increase in enquiries that is higher than usual with the foremost reasons for the enquiries being that the school's reputation is good and that we are offering what parents want for their children. While we still have a long way to go in addressing every area of improvement we have identified, this is confirmation that we are indeed on the right track.

While this is great news for the school in terms of community confidence, increased enrolments will bring additional changes we must prepare for. This might require some additional changes, but the school will make every reasonable effort to keep these to a minimum and keep parents informed as and when these might happen.

**Steve Hordacre**

## P&C News

### Easter Raffle

Raffle tickets have been sent home to families. Thanks to those who have returned their named ticket butts and money. There is still plenty of time to return your tickets, ready for the draw on Friday 12<sup>th</sup> April.

We are also looking for donations of Easter goodies to make this raffle a success.

### *A date for your diaries.....*

#### ~~~**BOGAN BINGO**~~~

Saturday 17<sup>th</sup> August 2019 ~ 6:30pm  
Belmont Sports and Recreation Centre

The Bogan Bingo night will be a major fundraiser for the P&C and we need YOUR help! We will need donations of items to be used as raffle prizes, especially bottles of wine for our Wine Wall raffle on the night. Please send your donations in to school.

Many thanks for your support.  
P&C Fundraising Committee.

## Workplace Learning

On occasion, various organisations will send us some holiday opportunities for families to consider and participate in. Where appropriate we will include them in our newsletter or as an attachment that families can take advantage of. In this copy of the Kensington newsletter, Workpower has advertised an opportunity for students over 15 to 'Get Work Ready'. Please have a look at the back page for details and see if you can avail yourself of this opportunity. Be quick to secure your placement!

In other news, the students enrolled in Workplace Learning are settling in well at their various placements, some for the first time. Take a look below to see Luke completing various tasks in sequence at Coles Waterford.

Great work Luke!

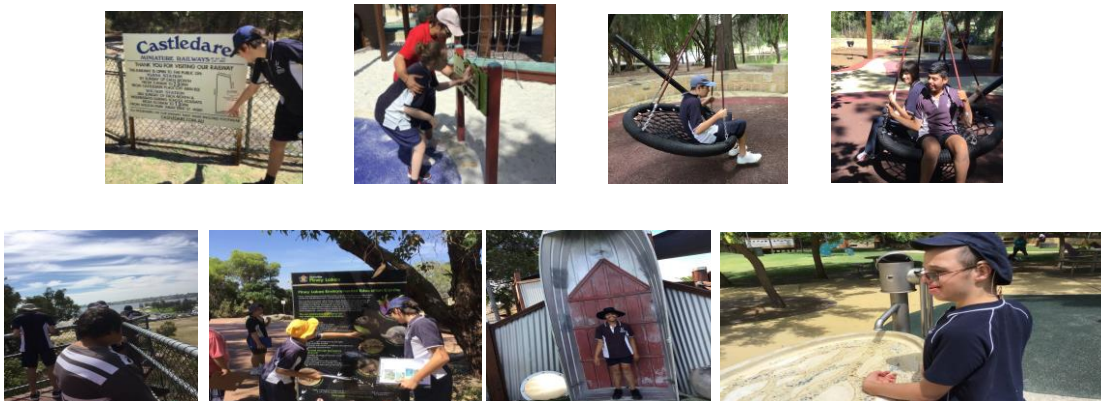


# Room 4

Enterprise Education is an approach to learning where students identify real life projects such as social, personal, civic, community and work. The students have been making their own swimming bags and napkins for the Work Ready Program.



Community Access Program - students attend different places that enhance students' social skills needed when they are out in the community, develop social aspects of public behaviour and interact with other people, enhance teamwork and practice getting ready to leave on time.



## ROOM 10 NEWS



Room 10 can be a pretty messy place at times! We taste, smell, feel, listen and change the textures and colours as we create. We are working hard through sensory experiences to develop our skills in communicating, taking turns and having some good old-fashioned fun!



# FROM THE HILLS TO THE SEA, ROOM 11's THE PLACE TO BE!

ROOM 11 HAS BEEN  
EXTREMELY BUSY THE LAST  
FEW WEEKS!

THE HIGHLIGHT WAS  
VISITING COTTESLOE TO SEE  
THE ART AT SCULPTURES BY  
THE SEA...

BUT OURS IS BETTER!



For young people aged 15+ with disability and mental health conditions

**Workpower**

**GET WORK READY**

**Kickstart your career at our employment workshop!**

Join young people from across Perth as you explore career opportunities and develop the skills you need to succeed!

**WHAT YOU'LL DO**

- Gain work experience across a range of roles and environments
- Develop your employment skills
- Find out how to start your own business
- Visit local businesses and employers
- Get advice from employers, local business owners, and industry professionals
- Explore vocational employment and the discovery process

**PROGRAM INFORMATION**

**Session times:**

- Sunday 9<sup>th</sup> April 2019
- Wednesday 10<sup>th</sup> April 2019
- Sunday 22<sup>nd</sup> April 2019
- Wednesday 24<sup>th</sup> April 2019

**Centre address:**  
Workpower, 123/1008 Albany Inlet, Carlingford WA

**REGISTER TODAY!**

Registration deadline: Friday 12<sup>th</sup> April 2019

Registration contact: Kathy Kelly  
0489 834 546 | kathy.kelly@workpower.com.au

PERTH AND SURROUNDS  
AGES 7 - 17

For young people with disability, mental health conditions, and autism

**Workpower**

**SCHOOL HOLIDAY PROGRAM**

School holiday support tailored to suit you!

**\$15** weekly cost per day

Workpower offers an exciting range of school holiday supports for children and young people. Join the fun at our school holiday program, or contact us today to arrange individual supports to suit your needs!

**PROGRAM INFORMATION**

**Ages:** 7 - 17 (mixed group)

**Activity times:**  
Monday - Friday, 9:00am - 4:00pm (including public holidays)

**Centre address:**  
Salvation Army Morley centre  
545 Walter Rd East, Morley WA

**Booking deadline:** 15<sup>th</sup> March 2019

**REGISTER TODAY!**

Spaces in our popular program are allocated on a first-come, first-served basis. Book today to avoid disappointment!

Registration contact: Elzbieta Kantha  
0407 985 628 | elzbieta.kantha@workpower.com.au